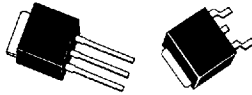


# 2SK1472



2083A

2092A

LD (Low Drive) Series  $V_{DSS}=60V$

## N Channel Power MOSFET

©3773A

### Features

- Low ON resistance.
- Very high-speed switching.
- Low-voltage drive.

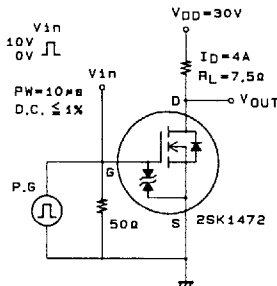
### Absolute Maximum Ratings at $T_a=25^\circ C$

Parameter	Symbol	Condition	unit
Drain to Source Voltage	$V_{DSS}$		60 V
Gate to Source Voltage	$V_{GSS}$		$\pm 15$ V
Drain Current(DC)	$I_D$		8 A
Drain Current(Pulse)	$I_{DP}$	$PW \leq 10\mu s, \text{ duty cycle} \leq 1\%$	32 A
Allowable Power Dissipation	$P_D$		1.0 W
		$T_c = 25^\circ C$	30 W
Channel Temperature	$T_{ch}$		150 $^\circ C$
Storage Temperature	$T_{stg}$		-55 to +150 $^\circ C$

### Electrical Characteristics at $T_a=25^\circ C$

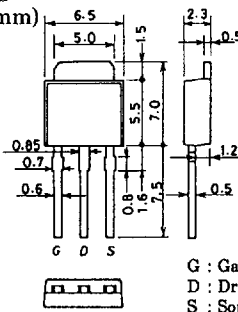
Parameter	Symbol	Condition	min	typ	max	unit
D-S Breakdown Voltage	$V_{(BR)DSS}$	$I_D = 1mA, V_{GS} = 0$	60			V
G-S Breakdown Voltage	$V_{(BR)GSS}$	$I_G = \pm 100\mu A, V_{DS} = 0$	$\pm 15$			V
Zero Gate Voltage Drain Current	$I_{DSS}$	$V_{DS} = 60V, V_{GS} = 0$			100	$\mu A$
Gate to Source Leakage Current	$I_{GSS}$	$V_{GS} = \pm 12V, V_{DS} = 0$			$\pm 10$	$\mu A$
Cutoff Voltage	$V_{GS(off)}$	$V_{DS} = 10V, I_D = 1mA$	1.0		2.0	V
Forward Transfer Admittance	$ Y_{fs} $	$V_{DS} = 10V, I_D = 4A$	5	8		S
Static Drain to Source on State Resistance	$R_{DS(on)}$	$I_D = 4A, V_{GS} = 10V$		60	80	$m\Omega$
	$R_{DS(on)}$	$I_D = 4A, V_{GS} = 4V$		80	110	$m\Omega$
Input Capacitance	$C_{iss}$	$V_{DS} = 20V, f = 1MHz$		950		pF
Output Capacitance	$C_{oss}$	$V_{DS} = 20V, f = 1MHz$		250		pF
Reverse Transfer Capacitance	$C_{rss}$	$V_{DS} = 20V, f = 1MHz$		50		pF
Turn-ON Delay Time	$t_{d(on)}$	See specified Test Circuit.		13		ns
Rise Time	$t_r$	"		30		ns
Turn-OFF Delay Time	$t_{d(off)}$	"		110		ns
Fall Time	$t_f$	"		80		ns
Diode Forward Voltage	$V_{SD}$	$I_S = 8A, V_{GS} = 0$	1.0	1.5		V

### Switching Time Test Circuit



### Package Dimensions 2083A

(unit : mm)



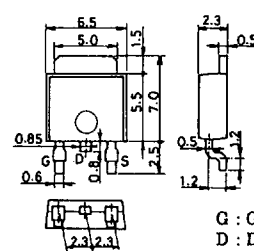
G : Gate  
D : Drain  
S : Source

2.3 2.3

SANYO : TP

### Package Dimensions 2092A

(unit : mm)



G : Gate  
D : Drain  
S : Source

SANYO : TP-FA

71993TH (KOTO) 8-7548, 7921 No.3773-1/3

